

QA3™

Ophthalmic Stretcher

Outstanding surgical access –
exceptional patient comfort



Innovative **Medical** Technology - **Practically Applied**



AneticAid

QA3™ OPHTHALMIC STRETCHER

Impressive head-end surgical access, low height, patient comfort and light weight manoeuvrability all combine to produce a perfect transport, treatment and recovery stretcher for ophthalmology.



TRANSPORT TREATMENT RECOVERY



Moving and Handling

Zero transfers mean risk is minimised for patient and practitioner alike: from the ward, through anaesthetics, to the surgical procedure, and finally to first and second recovery.

Exceptional Surgical Access

With a low-profile depth sculpted backrest, sculpted shoulder area free from function operating handles and it's low-profile positioning headrest, exceptional surgical access and leg room are achieved.



Combining industry knowledge with innovative technology



Designed and produced at our UK manufacturing facility using the latest engineering techniques



Manufacturer, designer and supplier of high quality medical equipment around the world



Unique manufacturer-backed Lifetime Warranty Scheme

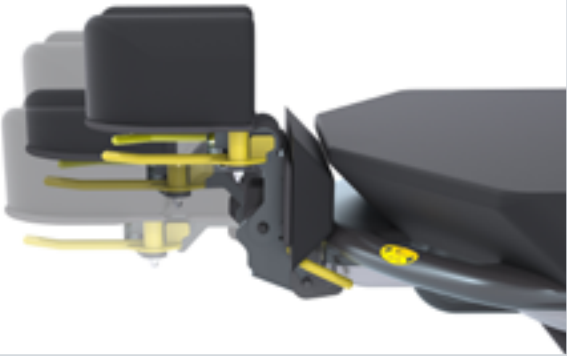
STANDARD FEATURES

Spacious leg room, optimal positioning, optimal access from superior or temporal approach – the QA3 Ophthalmic Stretcher offers both the surgeon and the patient an improved surgical journey.

And for support workers it contributes to the drive in reducing manual handling with its exceptional low height, powered functions and light weight manoeuvrability.

Removable dual-articulating headrest

Articulating not only on the head section, but also the neck as well, this innovative, intuitive and easy to use head positioner offers superb surgical positioning, surgical access and patient comfort.



Exceptional surgical access

Providing 585mm of clearance underneath the head & back section for comfortable leg room and surgical access from both a superior and temporal approach.

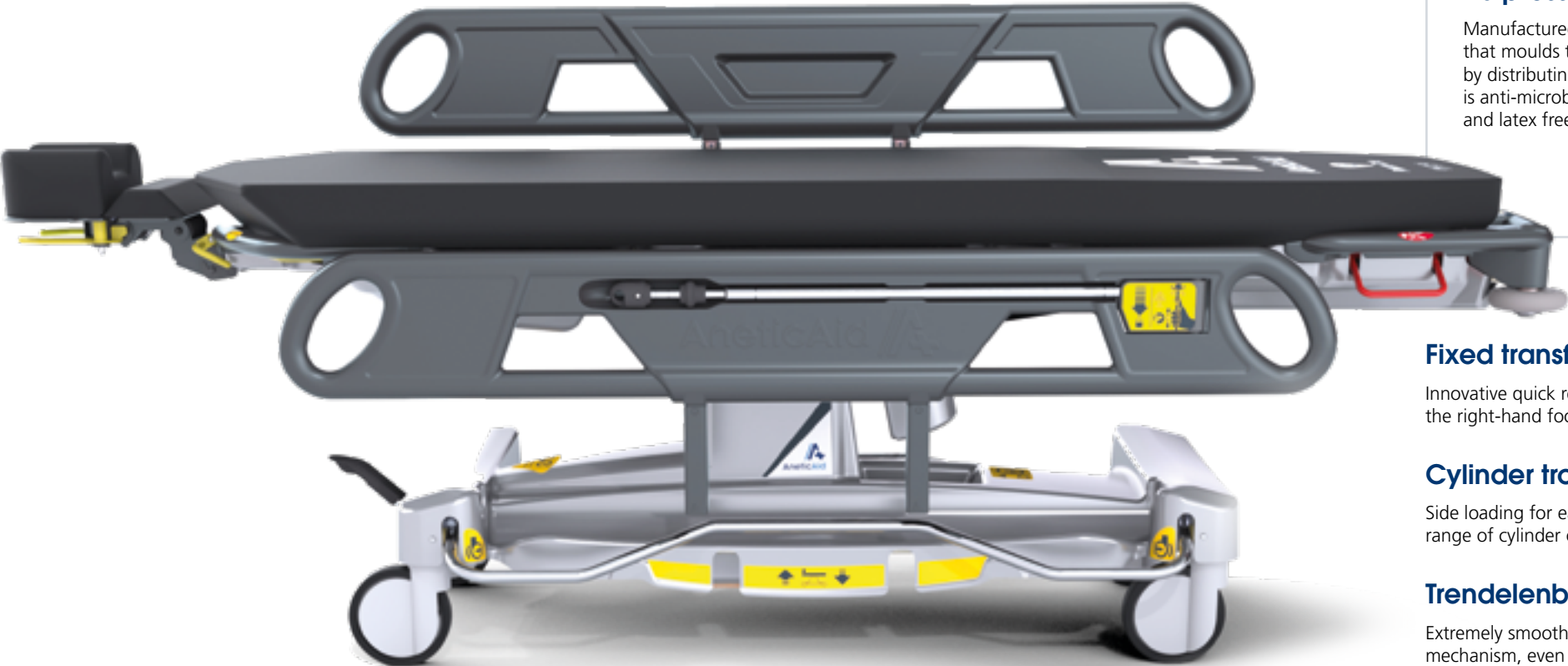
Exceptional patient comfort

Low height of 475mm (excluding mattress) store away side rails allowing for easier mount/dismount particularly frail and elderly patients and a versatile positioning headrest. Wide patient platform and pressure care mattress for comfort.



K8 pressure care mattress

Manufactured from temperature-sensitive gel feel foam that moulds to the patient's body shape, relieving pressure by distributing the load as evenly as possible. Outer material is anti-microbial, water resistant, vapour permeable and latex free.

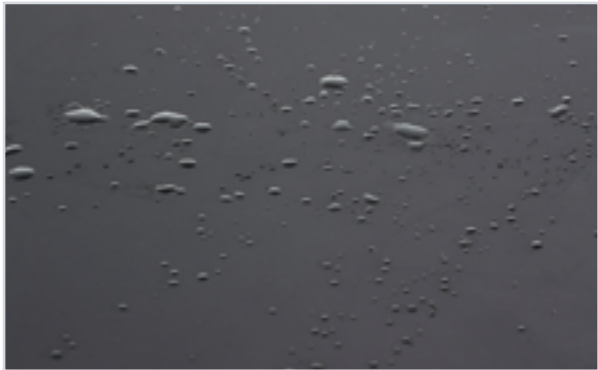


Vertically operated safety side rails

Store away under the mattress improving the ease of mounting and dismounting the stretcher for the patient.

Press on / Press off 5th wheel steer

Our unique mechanism ensures maximum manoeuvrability and means the QA3 is easily guided by one support worker.



Infection control

Smooth moulded surfaces and acrylic capped vac formings enclose trolley mechanics to minimise dirt traps. Anti-bacterial properties and innovative design for easy cleaning.

Simultaneous braking low rolling resistance castors

Polyurethane tyres offer low rolling resistance for high manoeuvrability: 150mm diameter central total lock castors fitted as standard, helping to offer a rigid and reliable work platform.

Space saving design

With the back rest and KneeFlex raised, the stretcher has an incredibly small foot-print - making it a comfortable and manoeuvrable recovery or transport position and easier to store when not in use.

Fixed transfusion pole

Innovative quick release safety locking mechanism, integrated into the right-hand foot end side rail for easy access and storage.

Cylinder trough

Side loading for ease of access, suitable for wide range of cylinder options including E, F, CD and HX.

Trendelenburg tilt

Extremely smooth and controlled hydraulic mechanism, even at lowest height.



A unique combination of manoeuvrability and stability



DESIGN & INNOVATION



MADE IN THE UK



GLOBAL DISTRIBUTION

POWERED FEATURES

Minimise risks for practitioners dealing with increasing patient weights with powered positioning: the whole stretcher platform or the backrest can be raised or lowered electronically from the panel at the foot end.

With four powered functions – platform raise and lower, back rest, KneeFlex and Profile - as well as CPR return – the QA3™ Ophthalmic Stretcher is a truly powerful and versatile platform for transport, treatment and recovery.



QA3™
Ophthalmic Stretcher



Electrically Powered Functions

Easy to operate using the positive feel push button controls on a panel at the foot of the Stretcher

Battery powered

Long-life rechargeable nickel-metal hydride battery with highly accurate charge indicator

Platform height



Offers smooth movement to position the stretcher at any point in its height range – 475mm to 775mm



Backrest

Positions the backrest anywhere between the vertical and horizontal for maximum patient comfort



KneeFlex

Easy elevation of the knees to offer improved comfort in a supine position



Profiling

Easy elevation of the back rest and knees at the same time to offer improved comfort during recovery



CPR Return

If a patient needs CPR treatment, there is no time to lose: the powered CPR feature returns the stretcher swiftly to a horizontal, optimal height position for CPR treatment

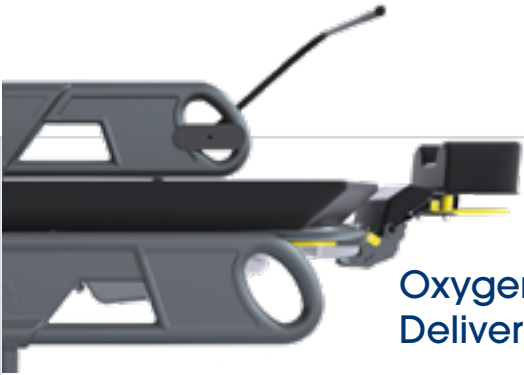


SPECIFICATIONS		Code: 2118	
Minimum height	*475mm	Mattress length	2185mm
Maximum height	*775mm	Mattress width	700mm
*excludes mattress		Mattress depth	90mm
Surgical Access	585mm	Maximum patient weight	320kg
Minimum length	1644mm	Backrest	0 to +70°
Maximum length	2255mm	KneeFlex	0 to +30°
Overall width	805mm	Trendelenburg	0 to -12°
Weight	144kg	Headrest	0 to -87 / +45°



Effortless positioning at the touch of a button


Customise your QA3 Ophthalmic Stretcher at the time of ordering to better suit your departments needs or add greater versatility to your QA3 with this range of convenient accessories.



Oxygen Delivery Bar

Two products in one. An over patient drape / anaesthetic screen and Oxygen delivery system. This versatile flexible accessory mounts onto the side rail via a clamp and can be bent over the patient for drapes to create a screen. The barbed end allows for Oxygen tubing to be connected and the fenestrated end delivers a quiet, consistent, flow of oxygen within the screened area.


Description	Code
Optional Extra Code	21365
Oxygen Delivery Bar/Drape Screen Clamp	21167



Theatre Pillow

Tired of the number of pillows heading to the laundry reducing their availability? This water impermeable material covered, superbly comfortable pillow reduces the turnaround time for pillows between uses. Simply clean & disinfect by hand between uses.

Description	Code
Optional Extra Code	10545



Flat Head

Single articulation, flat headrest for intubation and less complex surgical procedures or positioning requirements.

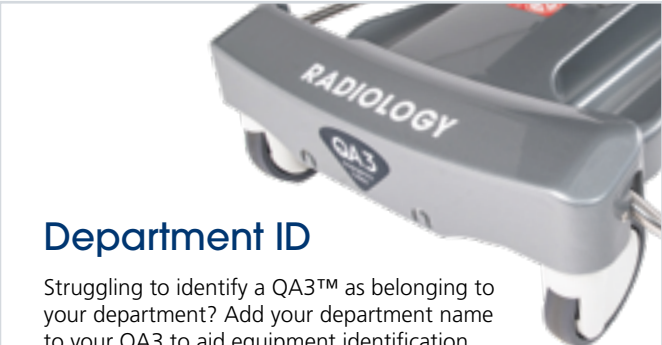
Description	Code
Build Option Code	22321
Optional Extra Code	69870/A



Full Width Head

Single articulation, flat headrest with a wider operating surface for surgical instruments and ENT procedures.

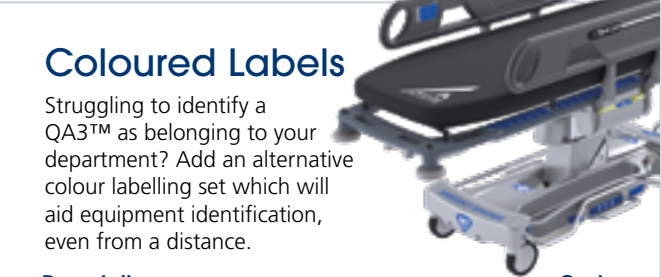
Description	Code
Build Option Code	22322
Optional Extra Code	21322



Department ID

Struggling to identify a QA3™ as belonging to your department? Add your department name to your QA3 to aid equipment identification. Maximum of 22 characters including spaces.

Description	Code
Build Option Code	21175




Coloured Labels

Struggling to identify a QA3™ as belonging to your department? Add an alternative colour labelling set which will aid equipment identification, even from a distance.

Description	Code
Build Option Code	21175-C1 RED
	21175-C2 BLUE
	21175-C3 GREEN
	21175-C4 YELLOW

BUILD OPTIONS & OPTIONAL EXTRAS



Hand Control

Introduce greater flexibility when repositioning the QA3™ by adding a hand control.

Description	Code
Build Option Code	22150
Replacement Hand Control	693900



Storage

In need of more storage space on your QA3™? Add a conveniently positioned foot-end base mounted storage container mounted onto retractable runners for when the container isn't needed.


Description	Code
Build Option Code	21191



Refreshment Tray

Specifically designed for use with a QA3™, this innovative shelf has retractable legs which can be deployed and safely seated onto the top of the side rails - to become a convenient patient refreshment tray, or over patient equipment storage shelf.

Description	Code
Optional Extra Code	21152-A1



Push/Pull Bar

This foot-end mounted removable accessory helps to cater for those scenarios where additional manoeuvring requirements arise.

Description	Code
Optional Extra Code	21390



Side Rail

Foam padded covers made with a hard wearing wipeable material, designed to completely encapsulate the QA3™ side rail when additional padding is felt to be needed.

Description	Code
Optional Extra Code	21171 GREY
	21173 CHILD PRINT



Mattress Protector

Tired of rugged footwear damaging your QA3™ mattress? This heavy duty material mattress protector will save your QA3™ from unnecessary costs in replacement covers.

Description	Code
Optional Extra Code	21189



LIFETIME WARRANTY

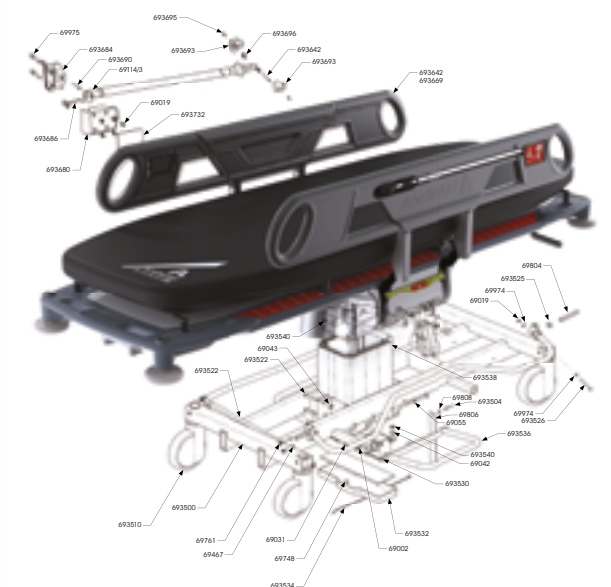
Subject to annual servicing

QA3™ Ophthalmic Stretcher:

We offer the unique
and popular
'Lifetime Warranty Scheme'

Take out a **AnetiCare** service package for regular and predictable maintenance costs that includes a **10 YEAR WARRANTY**.

Covers engineer's time and most parts
contact us to learn more about what an **AnetiCare** service package can offer you.



Value for money: minimum downtime, maximum peace of mind



DESIGN & INNOVATION



MADE IN THE UK



GLOBAL DISTRIBUTION

SEE
ALSO



QA4 Mobile Surgery System:

The complete multi-purpose solution for transport, treatment and recovery

PLUS

our other product areas



Scan this code to start a WhatsApp chat with Anetic Aid



OUR PRODUCT AREAS



For more information on any of our products or service contracts, call:
sales@aneticaid.com +44 (0)1943 878647 aneticaid.com



DESIGN & INNOVATION



MADE IN THE UK



GLOBAL DISTRIBUTION

Innovative **Medical** Technology - **Practically Applied**



ISSUE 3 - FEB 2021